

GridWorld Case Study

Part 4: Interacting Objects

The `Critter` Class

Critters are actors that share a common pattern of behavior, but the details may vary for each type of critter. When a critter acts, it first gets a list of actors to process. A critter then generates the set of locations to which it may move, selects one, and moves to that location.

Different types of critters may select move locations in different ways, may have different ways of selecting among them, and may vary the actions they take when they make the move. For example, one type of critter might get all the neighboring actors and process each one of them in some way (change their color, make them move, and so on). Another type of critter may get only the actors to its front, front-right, and front-left and randomly select one of them to eat. A simple critter may get all the empty neighboring locations, select one at random, and move there. A more complex critter may only move to the location in front or behind and make a turn if neither of these locations is empty.

Each of these behaviors fits a general pattern. This general pattern is defined in the `act` method for the `Critter` class, a subclass of `Actor`. This `act` method invokes the following five methods.

```
ArrayList<Actor> getActors()  
void processActors(ArrayList<Actor> actors)  
ArrayList<Location> getMoveLocations()  
Location selectMoveLocation(ArrayList<Location> locs)  
void makeMove(Location loc)
```

These methods are implemented in the `Critter` class with simple default behavior—see the following section. Subclasses of `Critter` should override one or more of these methods.

It is usually not a good idea to override the `act` method in a `Critter` subclass. The `Critter` class was designed to represent actors that process other actors and then move. If you find the `act` method unsuitable for your actors, you should consider extending `Actor`, not `Critter`.



Do You Know? Set 7

The source code for the `Critter` class is in Appendix C.

1. What methods are implemented in `Critter`?
2. What are the five basic actions common to all critters when they act?
3. Should subclasses of `Critter` override the `getActors` method? Explain.
4. Describe three ways that a critter could process actors.
5. What three methods must be invoked to make a critter move? Explain each of these methods.
6. Why is there no `Critter` constructor?

Default Critter Behavior

Before moving, critters process other actors in some way. They can examine them, move them, or even eat them.

There are two steps involved:

1. Determination of which actors should be processed
2. Determination of how they should be processed

The `getActors` method of the `Critter` class gets a list of all neighboring actors. This behavior can be inherited in subclasses of `Critter`. Alternatively, a subclass can decide to process a different set of actors, by overriding the `getActors` method.

The `processActors` method in the `Critter` class eats (that is, removes) actors that are not rocks or critters. This behavior is either inherited or overridden in subclasses.

When the critter has completed processing actors, it moves to a new location. This is a three-step process.

1. Determination of which locations are candidates for the move
2. Selection of one of the candidates
3. Making the move

Each of these steps is implemented in a separate method. This allows subclasses to change each behavior separately.

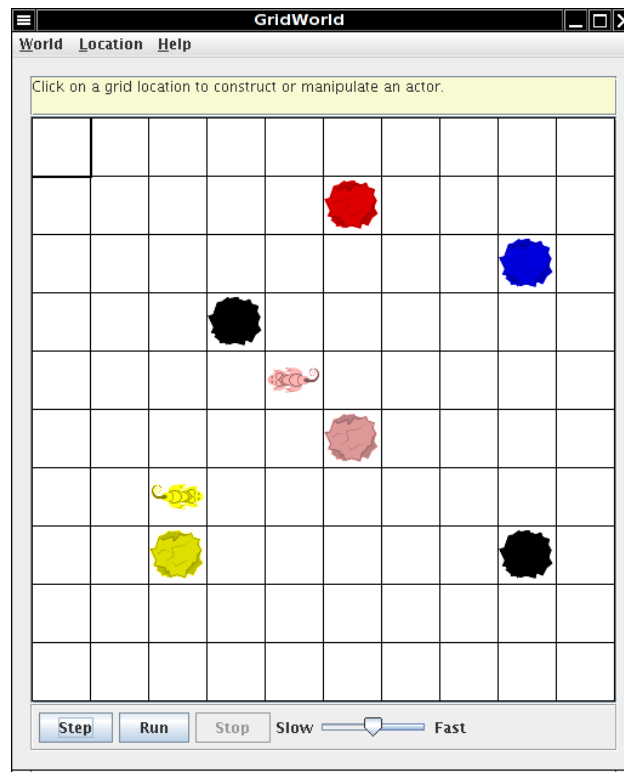
The `Critter` implementation of the `getMoveLocations` method returns all empty adjacent locations. In a subclass, you may want to compute a different set of locations. One of the examples in the case study is a `CrabCritter` that can only move sideways.

Once the candidate locations have been determined, the critter needs to select one of them. The `Critter` implementation of `selectMoveLocation` selects a location at random. However, other critters may want to work harder and pick the location they consider best, such as the one with the most food or the one closest to their friends.

Finally, when a location has been selected, it is passed to the `makeMove` method. The `makeMove` method of the `Critter` class simply calls `moveTo`, but you may want to override the `makeMove` method to make your critters turn, drop a trail of rocks, or take other actions.

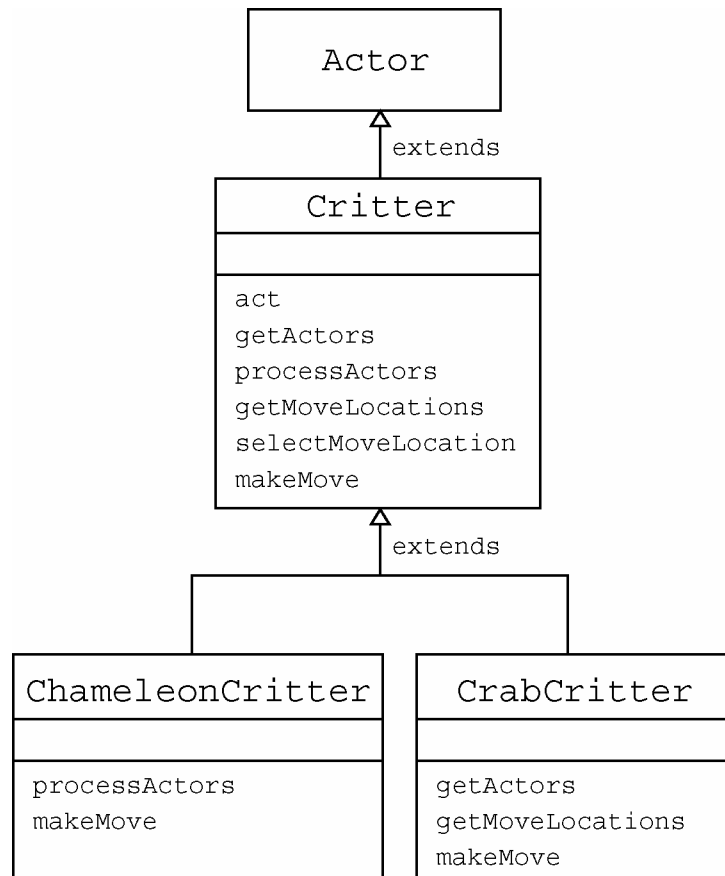
Extending the `Critter` Class

The `ChameleonCritter` class defines a new type of critter that gets the same neighboring actors as a `Critter`. However, unlike a `Critter`, a `ChameleonCritter` doesn't process actors by eating them. Instead, when a `ChameleonCritter` processes actors, it randomly selects one and changes its own color to the color of the selected actor.



The `ChameleonCritter` class also overrides the `makeMove` method of the `Critter` class. When a `ChameleonCritter` moves, it turns toward the new location.

The following figure shows the relationships among `Actor`, `Critter`, and `ChameleonCritter`, as well as the `CrabCritter` class that is discussed in the following section.



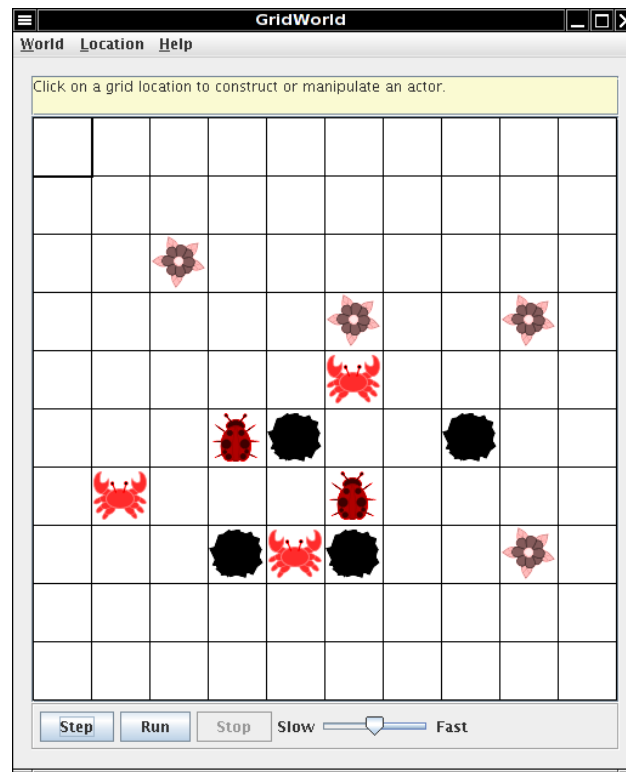
Do You Know? Set 8

The source code for the `ChameleonCritter` class is in Appendix C.

1. Why does `act` cause a `ChameleonCritter` to act differently from a `Critter` even though `ChameleonCritter` does not override `act`?
2. Why does the `makeMove` method of `ChameleonCritter` call `super.makeMove`?
3. How would you make the `ChameleonCritter` drop flowers in its old location when it moves?
4. Why doesn't `ChameleonCritter` override the `getActors` method?
5. Which class contains the `getLocation` method?
6. How can a `Critter` access its own `Grid`?

Another Critter

A `CrabCriticter` is a critter that eats whatever is found in the locations immediately in front, to the right-front, or to the left-front of it. It will not eat a rock or another critter (this restriction is inherited from the `Critter` class). A `CrabCriticter` can move only to the right or to the left. If both locations are empty, it randomly selects one. If a `CrabCriticter` cannot move, then it turns 90 degrees, randomly to the left or right.



Do You Know? Set 9

The source code for the `CrabCriticter` class is reproduced at the end of this chapter. This code is not required for the AP CS exam, but working with the code is good practice as preparation for the exam.

1. Why doesn't `CrabCriticter` override the `processActors` method?
2. Describe the process a `CrabCriticter` uses to find and eat other actors. Does it always eat all neighboring actors? Explain.
3. Why is the `getLocationsInDirections` method used in `CrabCriticter`?
4. If a `CrabCriticter` has location (3, 4) and faces south, what are the possible locations for actors that are returned by a call to the `getActors` method?
5. What are the similarities and differences between the movements of a `CrabCriticter` and a `Critter`?

6. How does a `CrabCritter` determine when it turns instead of moving?
7. Why don't the `CrabCritter` objects eat each other?

Exercises

1. Modify the `processActors` method in `ChameleonCritter` so that if the list of actors to process is empty, the color of the `ChameleonCritter` will darken (like a flower).



In the following exercises, your first step should be to decide which of the five methods—`getActors`, `processActors`, `getMoveLocations`, `selectMoveLocation`, and `makeMove`—should be changed to get the desired result.

2. Create a class called `ChameleonKid` that extends `ChameleonCritter` as modified in exercise 1. A `ChameleonKid` changes its color to the color of one of the actors immediately in front or behind. If there is no actor in either of these locations, then the `ChameleonKid` darkens like the modified `ChameleonCritter`.
3. Create a class called `RockHound` that extends `Critter`. A `RockHound` gets the actors to be processed in the same way as a `Critter`. It removes any rocks in that list from the grid. A `RockHound` moves like a `Critter`.
4. Create a class `BlusterCritter` that extends `Critter`. A `BlusterCritter` looks at all of the neighbors within two steps of its current location. (For a `BlusterCritter` not near an edge, this includes 24 locations). It counts the number of critters in those locations. If there are fewer than c critters, the `BlusterCritter`'s color gets brighter (color values increase). If there are c or more critters, the `BlusterCritter`'s color darkens (color values decrease). Here, c is a value that indicates the courage of the critter. It should be set in the constructor.
5. Create a class `QuickCrab` that extends `CrabCritter`. A `QuickCrab` processes actors the same way a `CrabCritter` does. A `QuickCrab` moves to one of the two locations, randomly selected, that are two spaces to its right or left, if that location and the intervening location are both empty. Otherwise, a `QuickCrab` moves like a `CrabCritter`.
6. Create a class `KingCrab` that extends `CrabCritter`. A `KingCrab` gets the actors to be processed in the same way a `CrabCritter` does. A `KingCrab` causes each actor that it processes to move one location further away from the `KingCrab`. If the actor cannot move away, the `KingCrab` removes it from the grid. When the `KingCrab` has completed processing the actors, it moves like a `CrabCritter`.

Group Activity

Organize groups of 2–4 students.

1. **Specify:** Each group specifies a new creature that extends `Critter`. The specifications must describe the properties and behavior of the new creature in detail.
2. **Design:** The groups exchange specifications. Each group reads the specification that it received and determines the needed variables and basic algorithms for the creature.
3. **Code:** Each group implements the code for the creature in the specification that it received.
4. **Test:** Each group writes test cases for the creature that they specified in step 1. Test cases are exchanged as in step 2. The recipients verify that the implementations meet the specifications.

CrabCritter.Java

```
import info.gridworld.actor.Actor;
import info.gridworld.actor.Critter;
import info.gridworld.grid.Grid;
import info.gridworld.grid.Location;

import java.awt.Color;
import java.util.ArrayList;

/**
 * A CrabCritter looks at a limited set of neighbors when it eats and moves.
 * This class is not tested on the AP CS A and AB exams.
 */
public class CrabCritter extends Critter
{
    public CrabCritter()
    {
        setColor(Color.RED);
    }

    /**
     * A crab gets the actors in the three locations immediately in front, to its
     * front-right and to its front-left
     * @return a list of actors occupying these locations
     */
    public ArrayList<Actor> getActors()
    {
        ArrayList<Actor> actors = new ArrayList<Actor>();
        int[] dirs ={ Location.AHEAD, Location.HALF_LEFT, Location.HALF_RIGHT };
        for (Location loc : getLocationsInDirections(dirs))
        {
            Actor a = getGrid().get(loc);
            if (a != null)
                actors.add(a);
        }

        return actors;
    }
}
```

```
/**
 * @return list of empty locations immediately to the right and to the left
 */
public ArrayList<Location> getMoveLocations()
{
    ArrayList<Location> locs = new ArrayList<Location>();
    int[] dirs = { Location.LEFT, Location.RIGHT };
    for (Location loc : getLocationsInDirections(dirs))
        if (getGrid().get(loc) == null)
            locs.add(loc);

    return locs;
}

/**
 * If the crab critter doesn't move, it randomly turns left or right.
 */
public void makeMove(Location loc)
{
    if (loc.equals(getLocation()))
    {
        double r = Math.random();
        int angle;
        if (r < 0.5)
            angle = Location.LEFT;
        else
            angle = Location.RIGHT;
        setDirection(getDirection() + angle);
    }
    else
        super.makeMove(loc);
}

/**
 * Finds the valid adjacent locations of this critter in different
 * directions.
 * @param directions - an array of directions (which are relative to the
 * current direction)
 * @return a set of valid locations that are neighbors of the current
 * location in the given directions
 */
public ArrayList<Location> getLocationsInDirections(int[] directions)
{
    ArrayList<Location> locs = new ArrayList<Location>();
    Grid gr = getGrid();
    Location loc = getLocation();

    for (int d : directions)
    {
        Location neighborLoc = loc.getAdjacentLocation(getDirection() + d);
        if (gr.isValid(neighborLoc))
            locs.add(neighborLoc);
    }
    return locs;
}
}
```